

200 nm
└───┘

Mag = 40.00 K X

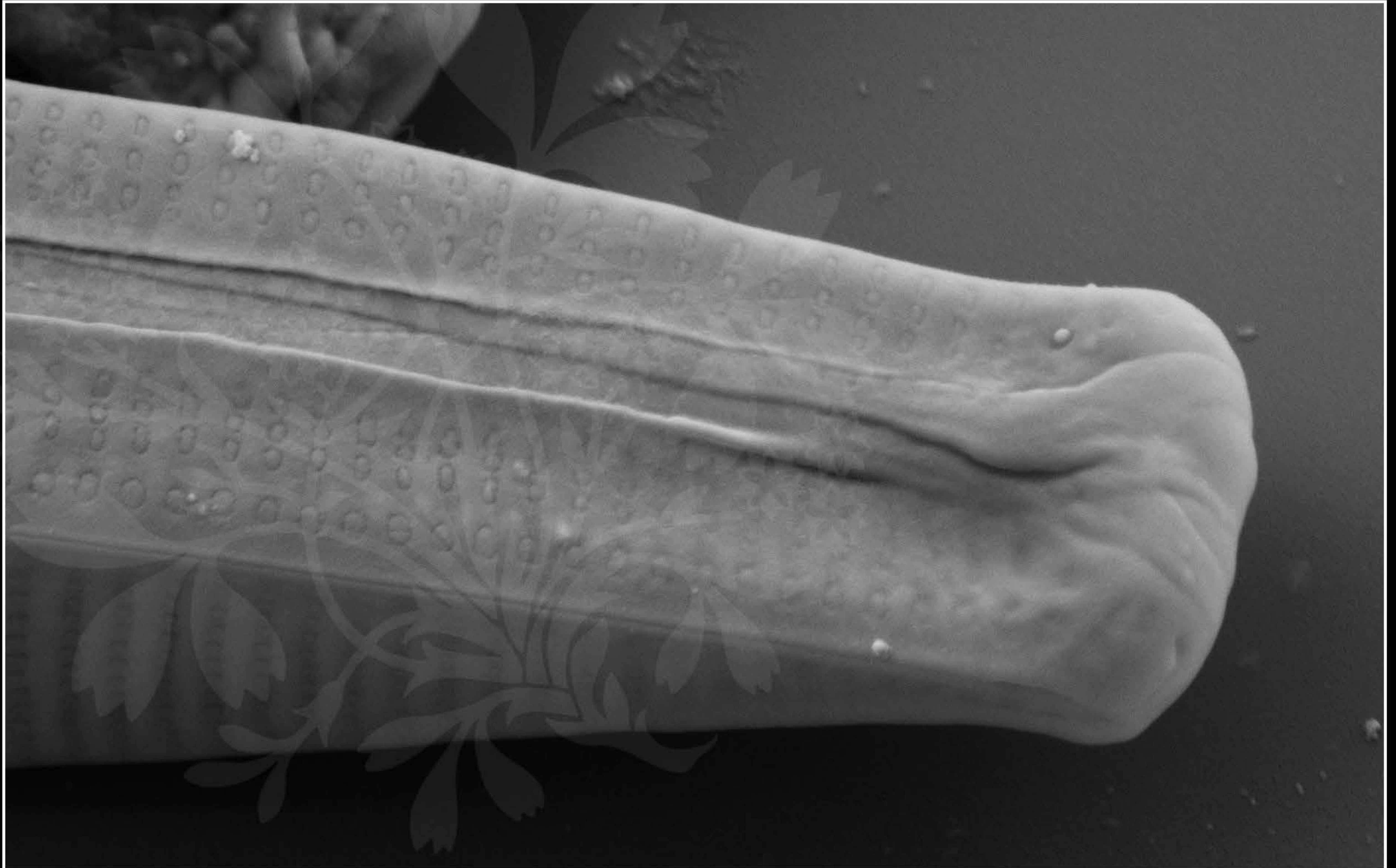
EHT = 5.00 kV

Signal A = SE2 Date :15 Jun 2017

WD = 4.4 mm

File Name = Belgium2_01.tif





200 nm
└─┘

Mag = 30.00 K X

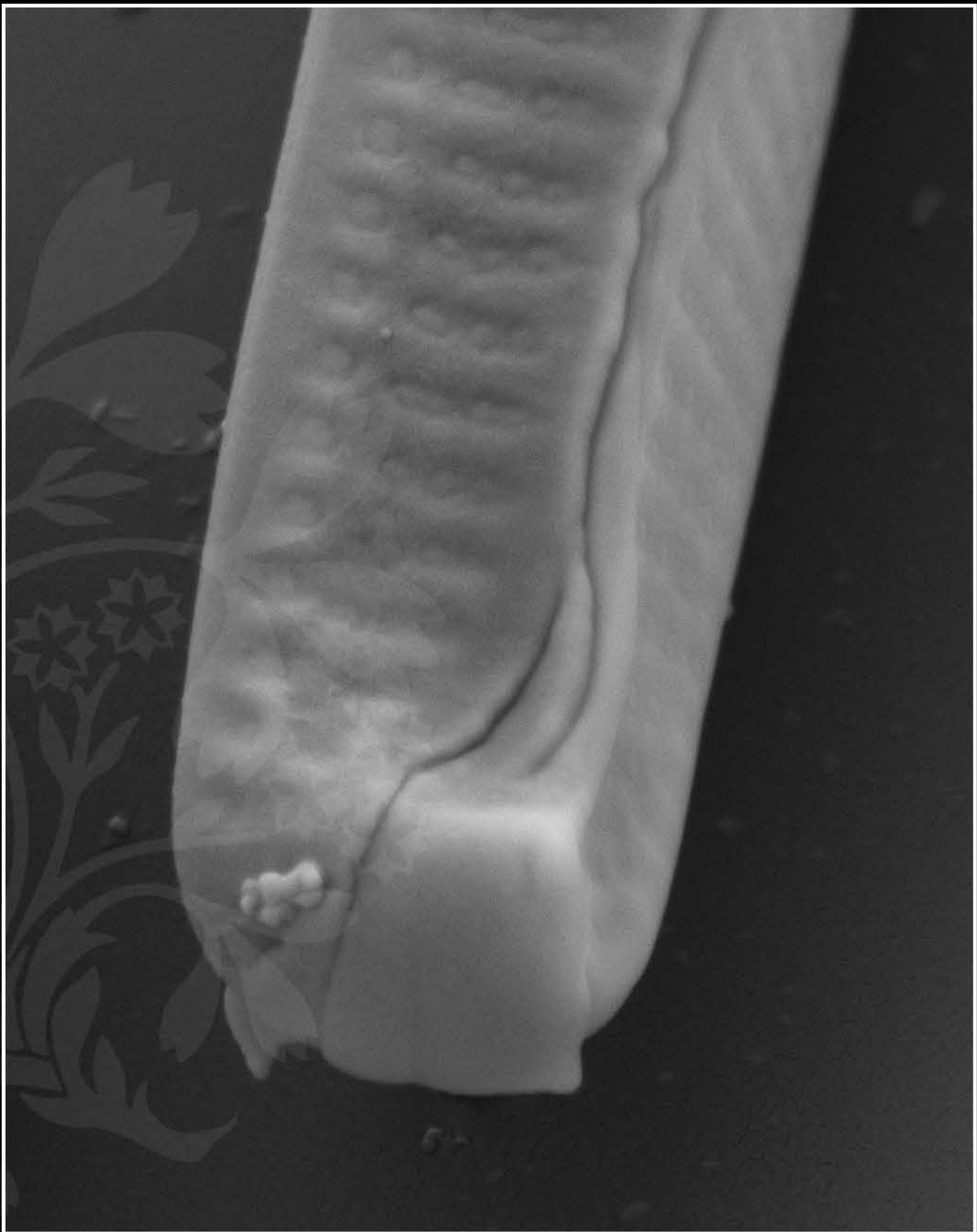
EHT = 5.00 kV

Signal A = SE2 Date :15 Jun 2017

WD = 4.4 mm

File Name = Belgium2_02.tif





200 nm
└───┘

Mag = 40.00 K X

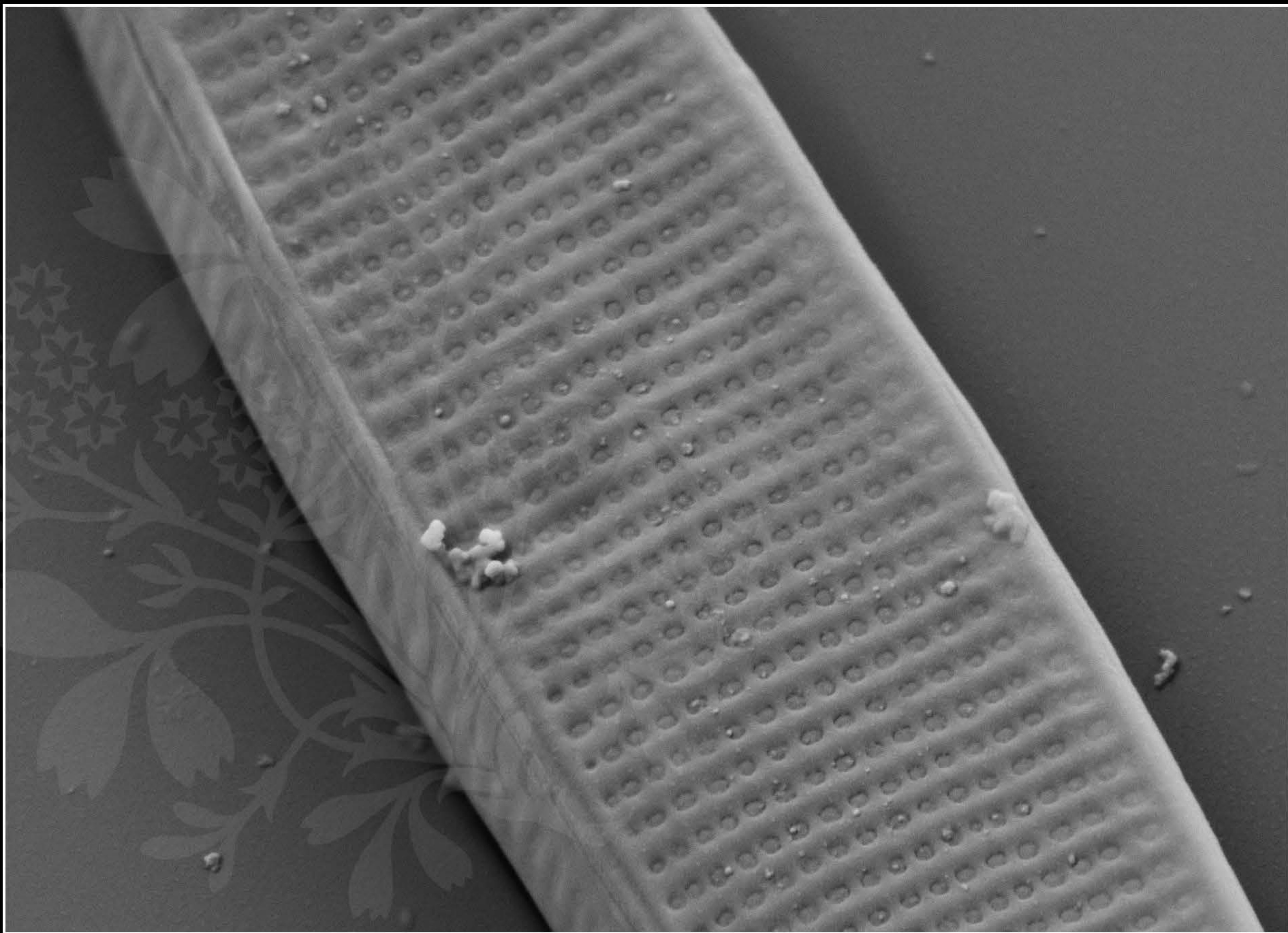
EHT = 5.00 kV

Signal A = SE2 Date :15 Jun 2017

WD = 4.4 mm

File Name = Belgium2_03.tif





200 nm
└─┘

Mag = 30.00 K X

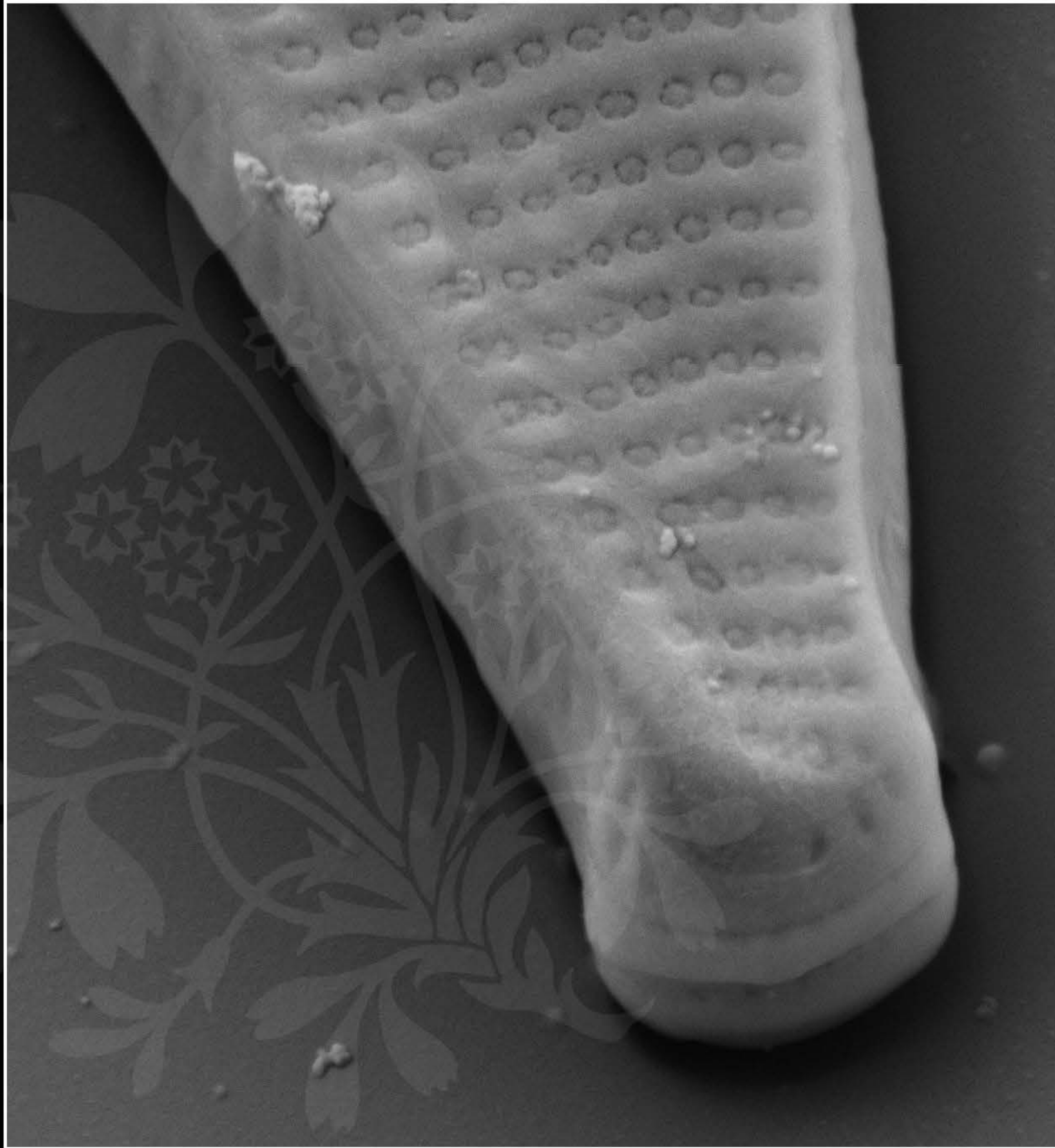
EHT = 5.00 kV

Signal A = SE2 Date :15 Jun 2017

WD = 4.4 mm

File Name = Belgium2_04.tif





200 nm
└───┘

Mag = 40.00 K X

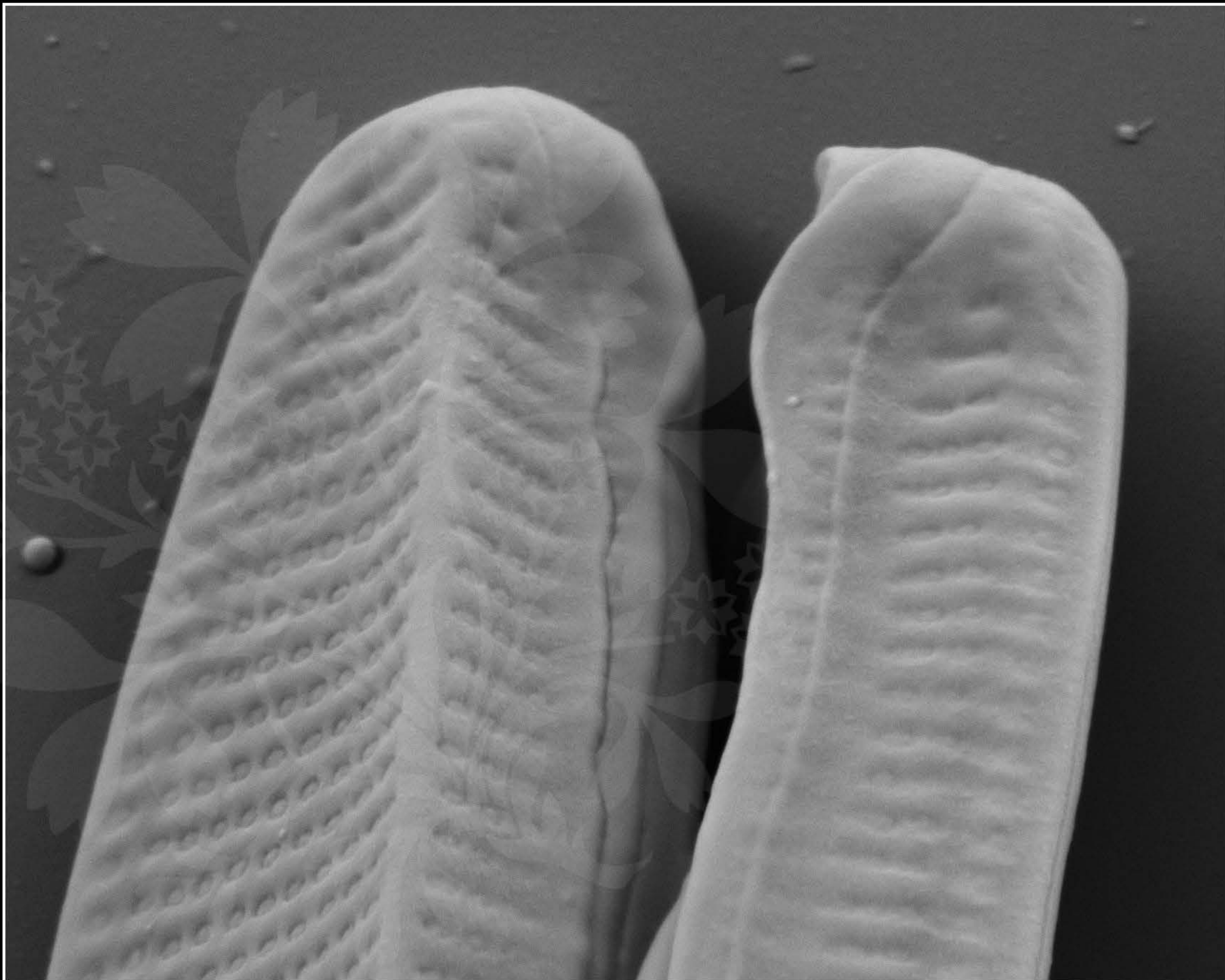
EHT = 5.00 kV

Signal A = SE2 Date :15 Jun 2017

WD = 4.4 mm

File Name = Belgium2_05.tif





200 nm
└───┘

Mag = 40.00 K X

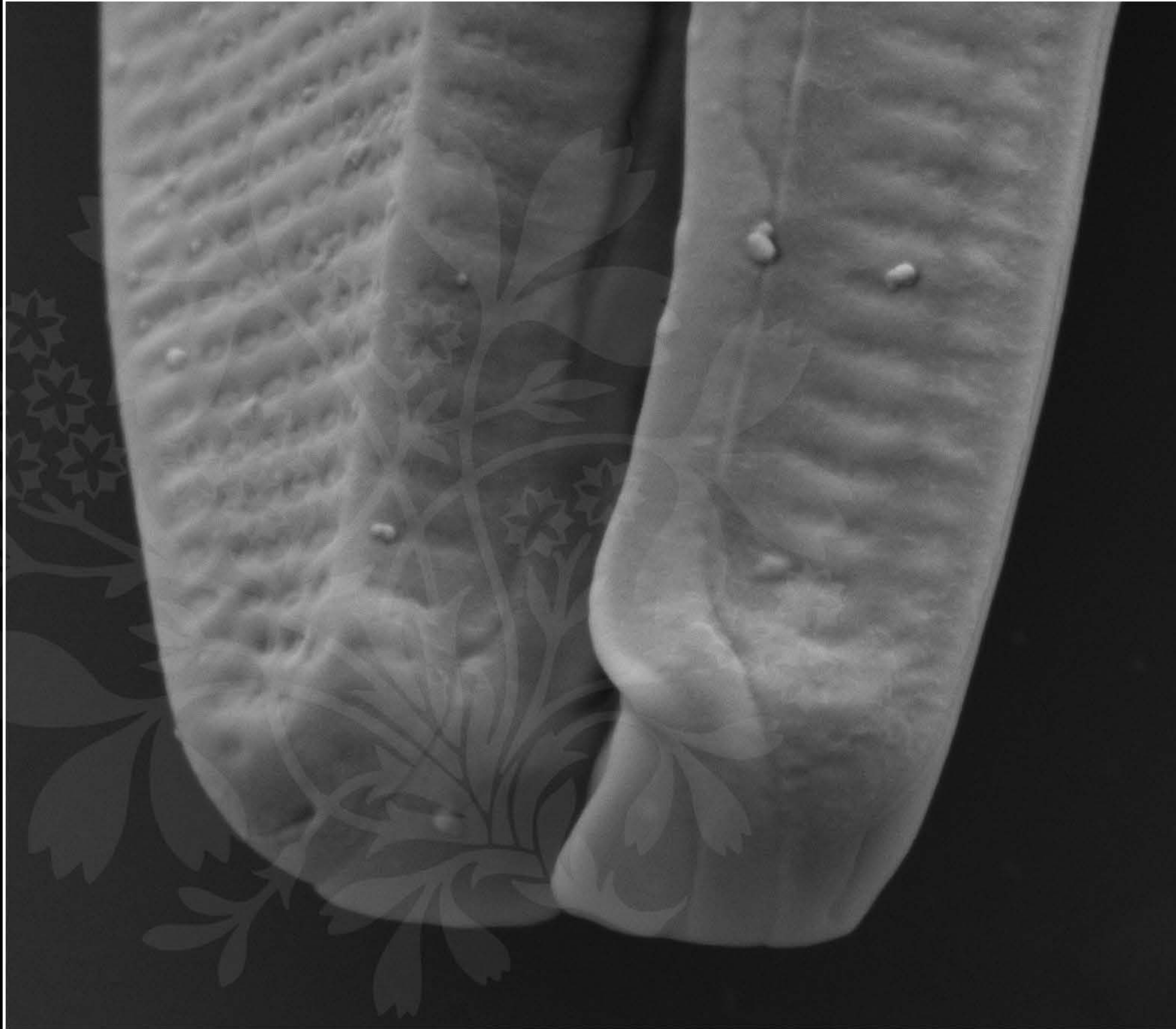
EHT = 5.00 kV

Signal A = SE2 Date :15 Jun 2017

WD = 4.4 mm

File Name = Belgium2_06.tif





200 nm
┌───┐

Mag = 40.00 K X

EHT = 5.00 kV

Signal A = SE2 Date :15 Jun 2017

WD = 4.4 mm

File Name = Belgium2_07.tif

